

# EXCELLENCE IN SEEDING



**Largo!** Gummi und  
Silikontechnik



Your soil machine deserves **best!**

**ABOUT THE COMPANY - HISTORY**

As a result of experience, Goran Vasiljevic, acquired in one of the well-known German companies engaged in the production and processing of elastomers, there is a "Largo" - company for production rubber - technical goods.

Founded in 2001. by private capital, as a Limited Liability Company.

Production began in modest circumstances, with four hydraulic presses and secure placement in Germany. Focusing on the German market caused the adoption of high standards of the German way of doing business, which led to the rapid growth of the company with the continuous expansion of the network of customers in the international market.

In 2006, Largo has certified the quality standard ISO 9001: 2008.

As a result of the need for a rapid response to requests from business partners, in early 2006 the company expanded to another organizational unit - toolroom with modern CNC machines and professional staff for the development and maintenance tools.

In March 2008, the company moved to a modern production plant area of 2500m<sup>2</sup>, with complete infrastructure.

In 2011. there were formed two organizational units for plastic injection and for cleaning of rubber parts in cryogenic deflashing machines.

In the year 2014. we enter into the development of rubber rolls for agricultural machinery.

2015. - expand capacity for injection LSR (liquid silicone rubber).

2016. - ends with the construction of a new production hall of 2500m<sup>2</sup> and enters the final phase of construction of modern administrative building.



**QUALITY MANAGEMENT**

Largo was awarded the international quality assurance certificate ISO 9001:2008 by the Belgrade branch of the accredited certification company TÜV-SÜD.

Bearing in mind EU market regulations, this certificate guarantees the application of strictly defined standards to our production process. The application of standards enables transparency and overview of the entire production process.

Largo is a very well-rated company in the international market. The best indicator of the business and operations of the company is the fact that we export 95% of our products to the European Union.

Security and quality management is essential in the process of development and improvement of our products. By doing so, we managed to fulfill the high demands of our customers.

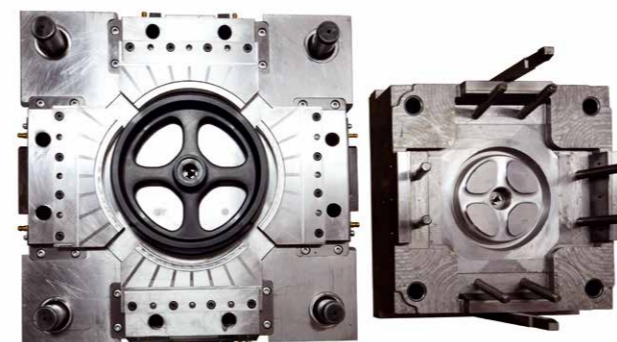
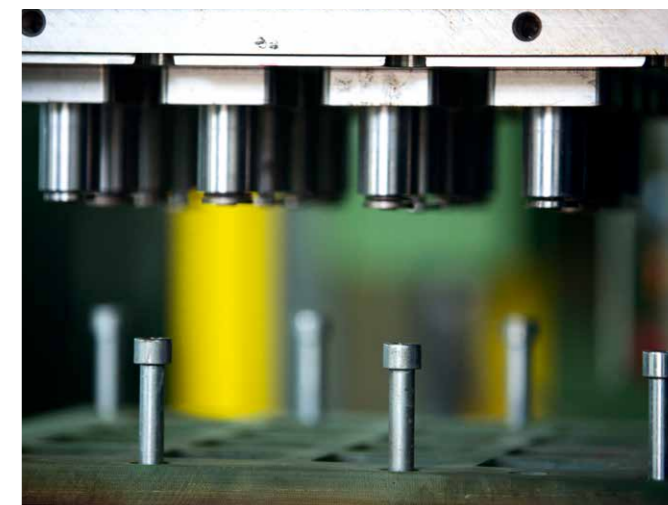


**TOOL ROOM**

In addition to the basic role of the tooling for its own production, tool capacity to service as well as the reparation of existing tools. Our biggest advantage is experience and knowledge in solving all the problems of individual production per sample and serial production.

Tools for the manufacturing process of rubber, silicone and plastic products, Largo produces in its own, modernly equipped tool room. This created the conditions for rapid new product development and guarantee superior quality of the final product.

Tool room owns CNC milling machines, CNC EDM, CNC - EDM to the wire, CNC lathe and a large number of specialized machine tools. Designing and producing are made by contemporary CAD / CAM programs for CNC, by 2D, 3D drawings or patterns.



## RUBBER AND SILICONE

"Largo" in its production program has more than five hundred of rubber and silicone products. The starting point is our quality standard ISO 9001-2008, and proof of this is the large number of renowned customers who have given us their trust.

We can offer the following product groups:

- Wheels
- Products with the rubber and metal connection
- Products with the rubber and plastic connection
- Rubber powder bumper
- Rubber cuffs
- Sealing rubber elements
- Rubber membranes
- Different types of rubber capsules, etc.

For our products we use raw materials purchased from reliable worldwide suppliers that comply with relevant quality standards and other specific demands, such as:

- Raw materials used for gas sealing (EN 549, EN 682)
- Raw materials used for water supply sealing (KWT, W 270)
- Raw materials for automotive industry (DBL 5556.30, DBL 5561.22, Hella N38 014, VW 2.8.1 etc...)
- Non-flammable raw materials (DIN 4102)
- Raw materials for sanitary devices (EN 681)

"Largo" has experience in working in a large batches of over 10,000,000 which can only be achieved by excellent internal organization as a very low percentage of non-compliant products.

We have own modern tool room and modern CAD / CAM software tools that enable us to fulfill all customer requirements. You can provide us with 2D, 3D model in STEP or IGES format or sample and shortly we will construct a tool and send you the requested product.

## WHEELS

Largo produces a wide range of rubber tires that are used for agricultural machines from renowned manufacturers. In addition to the rubber wheels in its production program we have and plastic rims for rubber wheels. Within our production facilities, we have a specialised unit solely dedicated to tire fitting. We offer our customers the option to either supply us with their own assembly components or leave the whole process to us.

Largo is fitted with equipment specifically designed for testing of wheels for agricultural machinery, so we have created the conditions for the simulation of realistic operating conditions. Each series is pre-tested so you can be sure that you always get a high quality end product.

"Largo" has a long experience in the production of wheels for agricultural machinery sizes from 100 mm to 700 mm and in large batches of 100,000 pieces.

## DO YOU WANT YOUR OWN DESIGN?

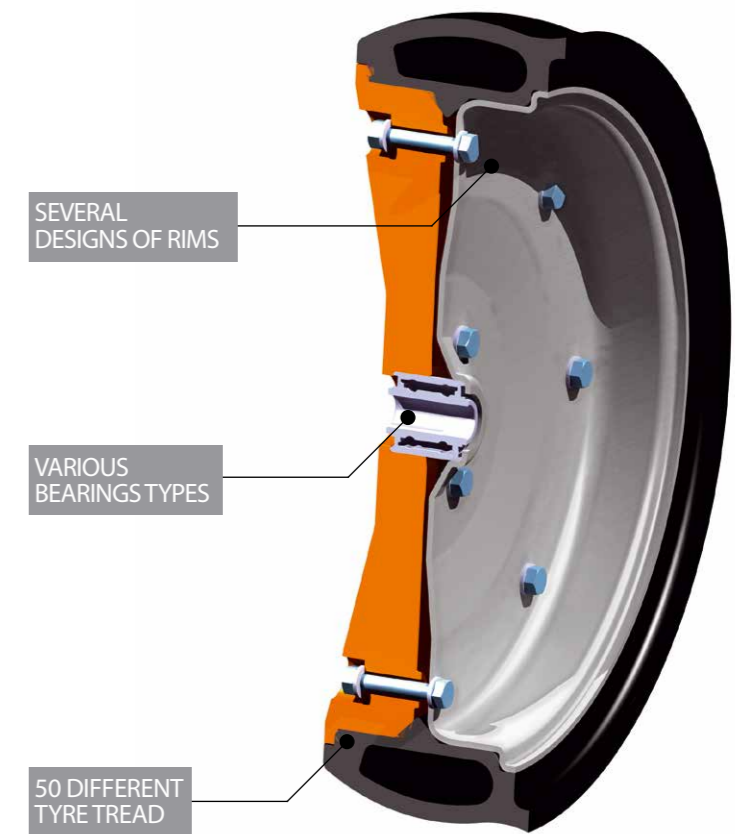
In our product line we currently have over 50 different profile tires.

New profiles are developed in our own the tool room in a very short period of time.

We offer several patented designs of rims of plastics and steel.

Do you want your own design? Our designers will help you developing or develop a model for you.

We can offer various types of bearings of trusted manufacturers.



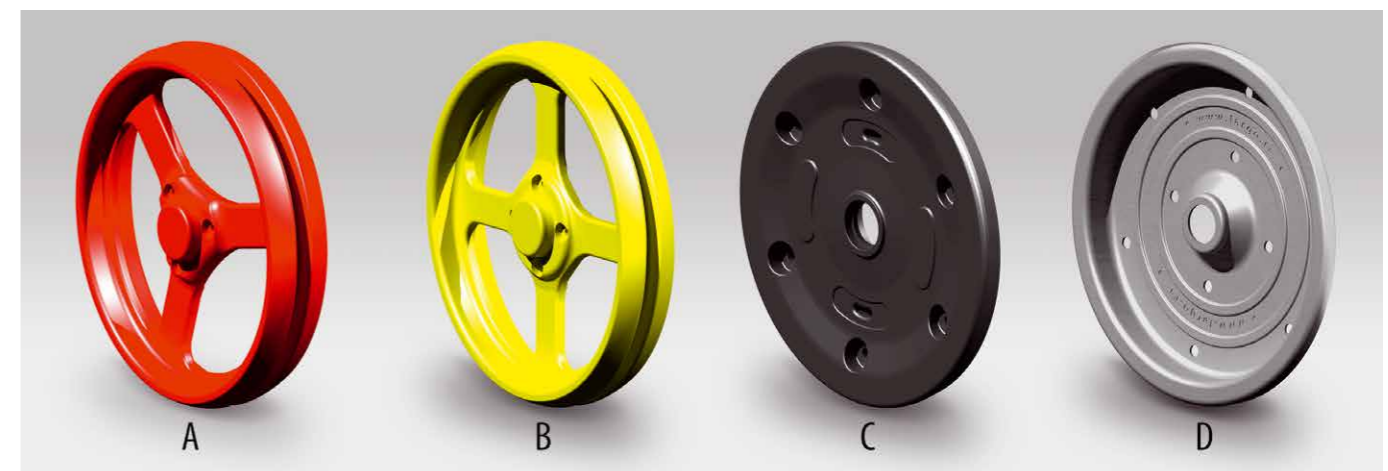
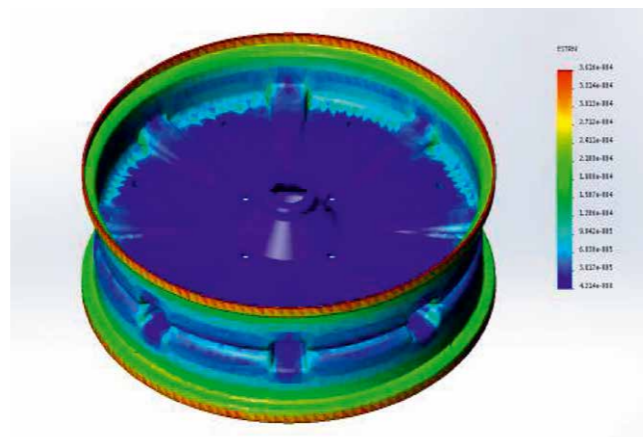
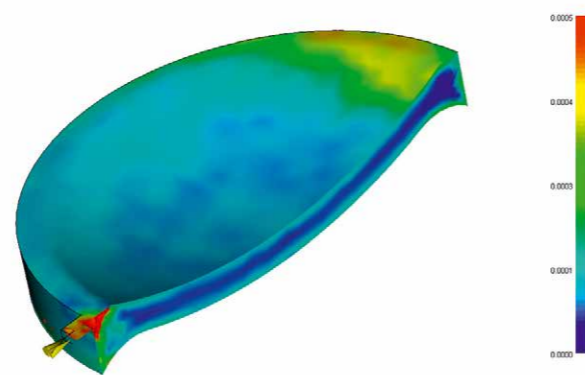
## COMPUTER ANALYSIS AND TESTING OF WHEELS

During the development of new wheels we pay special attention to the analysis.

We perform computer static tests of wheels with various loads to simulate as close to the real situation in the field and thus prevent potential vulnerabilities.

Also, we analyze the flow of materials after we do the construction tools.

Analyses provide uninterrupted production and guaranteed quality of the final product



Tire code  
00100



Outside diameter	With	Rubber Hardness	Rim type	Bearing type	Wheel code
160	40	40-70	A	B1	0100AB1
160	40	40-70	B	B1	0100BB1
160	40	40-70	C	B1	0100CB1
160	40	40-70	D	B1	0100DB1

Outside diameter	With	Rubber Hardness	Rim type	Bearing type	Wheel code
200	15	60-70	C	A1	0104CA1
200	15	60-70	C	B1	0104CB1
200	15	60-70	D	A1	0104DA1
200	15	60-70	D	B1	0104DB1



Tire code  
00104



Tire code  
00101



Outside diameter	With	Rubber Hardness	Rim type	Bearing type	Wheel code
160	70	40-70	A	B1	0101AB1
160	70	40-70	B	B1	0101BB1
160	70	40-70	C	B1	0101CB1
160	70	40-70	D	B1	0101DB1

Outside diameter	With	Rubber Hardness	Rim type	Bearing type	Wheel code
200	65	60-70	C	B1	0105CB1
200	65	60-70	D	B1	0105DB1



Tire code  
00105



Tire code  
00102



Outside diameter	With	Rubber Hardness	Rim type	Bearing type	Wheel code
170	15	60-70	C	A1	0102CA1
170	15	60-70	C	B1	0102CB1
170	15	60-70	D	A1	0102DA1
170	15	60-70	D	B1	0102DB1

Outside diameter	With	Rubber Hardness	Rim type	Bearing type	Wheel code
210	15	60-70	C	A1	0106CA1
210	15	60-70	C	B1	0106CB1
210	15	60-70	D	A1	0106DA1
210	15	60-70	D	B1	0106DB1



Tire code  
00106



Tire code  
00103



Outside diameter	With	Rubber Hardness	Rim type	Bearing type	Wheel code
185	30	50-70	C	A1	0103CA1
185	30	50-70	C	B1	0103CB1
185	30	50-70	D	A1	0103DA1
185	30	50-70	D	B1	0103DB1

Outside diameter	With	Rubber Hardness	Rim type	Bearing type	Wheel code
230	80	60-70	C	B1	0107CB1
230	80	60-70	D	B1	0107DB1



Tire code  
00107



Tire code  
00108



Outside diameter	With	Rubber Hardness	Rim type	Bearing type	Wheel code
250	25	60-70	C	A1	0108CA1
250	25	60-70	C	B1	0108CB1
250	25	60-70	D	A1	0108DA1
250	25	60-70	D	B1	0108DB1

Outside diameter	With	Rubber Hardness	Rim type	Bearing type	Wheel code
280	65	60-70	C	B1	0112CB1
280	65	60-70	D	B1	0112DB1



Tire code  
00112



Tire code  
00109



Outside diameter	With	Rubber Hardness	Rim type	Bearing type	Wheel code
250	42	40-60	C	A1	0109CA1

Outside diameter	With	Rubber Hardness	Rim type	Bearing type	Wheel code
280	65	60-70	C	B1	0113CB1
280	65	60-70	D	B1	0113DB1



Tire code  
00113



Tire code  
00110



Outside diameter	With	Rubber Hardness	Rim type	Bearing type	Wheel code
265	100	60-70	D	B1	0110DB1

Outside diameter	With	Rubber Hardness	Rim type	Bearing type	Wheel code
280	65	60-70	C	B1	0114CB1
280	65	60-70	D	B1	0114DB1



Tire code  
00114



Tire code  
00111



Outside diameter	With	Rubber Hardness	Rim type	Bearing type	Wheel code
280	60	60-70	C	B1	0111CB1
280	60	60-70	D	B1	0111DB1

Outside diameter	With	Rubber Hardness	Rim type	Bearing type	Wheel code
280	65	60-70	C	B1	0115CB1
280	65	60-70	D	B1	0115DB1



Tire code  
00115



Tire code  
00116



Outside diameter	With	Rubber Hardness	Rim type	Bearing type	Wheel code
280	100	60-70	D	B1	0116DB1

Outside diameter	With	Rubber Hardness	Rim type	Bearing type	Wheel code
310	25	60-70	C	B1	0120CB1
310	25	60-70	D	B1	0120DB1



Tire code  
00120



Tire code  
00117



Outside diameter	With	Rubber Hardness	Rim type	Bearing type	Wheel code
290	50	60-70	B	B1	0117BB1

Outside diameter	With	Rubber Hardness	Rim type	Bearing type	Wheel code
310	100	60-70	D	A1	0121DA1



Tire code  
00121



Tire code  
00118



Outside diameter	With	Rubber Hardness	Rim type	Bearing type	Wheel code
295	100	60-70	D	A1	0118DA1

Outside diameter	With	Rubber Hardness	Rim type	Bearing type	Wheel code
330	50	40-60	A	B1	0122AB1
330	50	40-60	A	C1	0122AC1
330	50	40-60	B	B1	0122BB1
330	50	40-60	B	C1	0122BC1
330	50	40-60	C	B1	0122CB1
330	50	40-60	C	C1	0122CC1
330	50	40-60	D	B1	0122DB1
330	50	40-60	D	C1	0122DC1



Tire code  
00122



Tire code  
00119



Outside diameter	With	Rubber Hardness	Rim type	Bearing type	Wheel code
300	100	60-70	D	A1	0119DA1

Outside diameter	With	Rubber Hardness	Rim type	Bearing type	Wheel code
330	50	50-60	A	B1	0123AB1
330	50	50-60	A	C1	0123AC1
330	50	50-60	B	B1	0123BB1
330	50	50-60	B	C1	0123BC1
330	50	50-60	C	B1	0123CB1
330	50	50-60	C	C1	0123CC1
330	50	50-60	D	B1	0123DB1
330	50	50-60	D	C1	0123DC1



Tire code  
00123



Tire code  
00124



Outside diameter	With	Rubber Hardness	Rim type	Bearing type	Wheel code
330	50	50-60	A	B1	0124AB1
330	50	50-60	A	C1	0124AC1
330	50	50-60	B	B1	0124BB1
330	50	50-60	B	C1	0124BC1
330	50	50-60	C	B1	0124CB1
330	50	50-60	C	C1	0124CC1
330	50	50-60	D	B1	0124DB1
330	50	50-60	D	C1	0124DC1

Outside diameter	With	Rubber Hardness	Rim type	Bearing type	Wheel code
370	165	60-70	D	A1	0128DA1



Tire code  
00128



Tire code  
00125



Outside diameter	With	Rubber Hardness	Rim type	Bearing type	Wheel code
330	65	50-60	C	B1	0125CB1

Outside diameter	With	Rubber Hardness	Rim type	Bearing type	Wheel code
370	165	60-70	D	A1	0129DA1



Tire code  
00129



Tire code  
00126



Outside diameter	With	Rubber Hardness	Rim type	Bearing type	Wheel code
330	75	50-60	C	B1	0126CB1
330	75	50-60	D	B1	0126DB1

Outside diameter	With	Rubber Hardness	Rim type	Bearing type	Wheel code
380	50	60	C	B1	0130CB1



Tire code  
00130



Tire code  
00127



Outside diameter	With	Rubber Hardness	Rim type	Bearing type	Wheel code
360	50	50-60	D	A1	0127DA1

Outside diameter	With	Rubber Hardness	Rim type	Bearing type	Wheel code
380	65	60-70	C	B1	0131CB1



Tire code  
00131



Tire code  
00132



Outside diameter	With	Rubber Hardness	Rim type	Bearing type	Wheel code
380	75	60	C	B1	0132CB1
380	75	60	D	B1	0132DB1

Tire code  
00133



Outside diameter	With	Rubber Hardness	Rim type	Bearing type	Wheel code
400	65	60-70	C	B1	0133CB1
400	65	60-70	D	B1	0133DB1

Tire code  
00134



Outside diameter	With	Rubber Hardness	Rim type	Bearing type	Wheel code
400	115	60-70	C	B1	0134CB1
400	115	60-70	D	B1	0134DB1



### PLANS

Ecology and conservation of resources are a strategic priority around the world. With that in mind, Largo is preparing to implement a quality system for environmental protection ISO 14001 certified.

By increasing the production capacity, our commitment is the constant training of personnel of different professional profiles in Serbia and abroad.

We are aware that contemporary business conditions require constant modernization, so "Largo" will in the coming period to place funds in the purchase of new production equipment, modern software and information systems.

In 2017, it is planned to complete work on modern administrative building area of 700m<sup>2</sup>.

For the year 2017, the planned expansion of production facilities and purchase of new equipment in the the tool room.

During 2017. and 2018. it is planned to expand production capacity for the rubber compound mixing plant to 5,000 tonnes per year. Also, we plan to supply by ourselves our own production of rubber mixtures and to deliver the mixture to the market.

During 2017. and 2018. it is planned to modernize and purchase new laboratory equipment.

In the second half of 2018. it is planned to complete the development of rubber rollers for agricultural machinery.



**Largo** Gummi und Silikontechnik

Largo d.o.o.  
Republic of Serbia





**Largo**  Gummi und  
Silikontechnik

**[www.largo.rs](http://www.largo.rs)**

Largo d.o.o.  
Popova Voda bb  
31311 Užice - Bela Zemlja  
Republic of Serbia  
tel: ++381 31 560 020  
fax: ++381 31 560 420  
e-mail: [info@largo.rs](mailto:info@largo.rs)